

## **August Otto Fischbeck**

### **List of Works**

(Status 25.06.2018)

- 1945     **Helpmekaar High School Boys' Hostel: Additions and alterations**  
(Source: South African Architectural Record, Journal of SAAI, August 1946)
  
- 1946     **Hercules North School (Mountain View ): Additions and alterations**  
(Source: South African Architectural Record, Journal of SAAI, August 1946)
  
- 1950     **Residence in Hurlingham, Johannesburg**  
Fishbeck and Knutzen, Associated Architects  
(Source: South African Architectural Record, Journal of SAAI, September 1950;  
see Annex 1)
  
- 1954     **Erection of new Hall at Hercules High School**  
(Source: South African Architectural Record, Journal of SAAI, July 1954)
  
- 1957     **Building, 63 Woodview Road, West Cliff**  
(Source: <http://www.heritageregister.org.za/listing/63-woodview-road-west-cliff>;  
see Annex 2, picture from Google Earth)
  
- 1961     **NHK Saal - Hall, Standertom, Mpumalanga**  
(Source: <http://artefacts.co.za>; see Annex 3)



The North elevation.

## RESIDENCE IN HURLINGHAM, JOHANNESBURG

FISHBECK AND KNUTZEN, ASSOCIATED ARCHITECTS.

The house was designed under Building Control limitations to meet the requirements of a young married couple. While the site presented difficulties in that it was long and narrow, the gentle slope and view towards the North and the access street on the South boundary provided the ideal basis for planning and arrangement of a private garden area.

The house was designed as a long narrow band across the site close to the South boundary so as to make the most of the garden space on the North, which is consequently completely shielded and screened from the street.

The greatest difficulty encountered was the narrowness of the plot, which necessitated making a pinched L-shaped plan for the servants' quarters encircling the service yard. These were screened from both the important aspects by the garage on the South and the Loggia screen wall on the North. Space was left behind the loggia screen wall for a future shower and change room for a swimming pool, which will be placed adjacent to the loggia in the garden.

Since all the principal rooms were made to face North, a

three-foot eaves overhand directly over the windows was provided to exclude the direct summer sun but permit sun penetration into the rooms in winter.

The whole scheme has been made as simple as possible and the use of too many materials has been avoided. Roofing is of shingles and the external walls are partly "Slasto" and partly limewashed stock brick, with ruled horizontal joints and flush vertical joints.

Originally the house was to have been roofed with an inverted pitch so that only the long sweep of the fascia board would have been visible on the North and South elevations. The fascia on the North elevation would have been extended to the outer extremity of the loggia providing a clean single line instead of existing trellis extension of the pitched roof.

The conventional finishes have been used internally, and the floor of the whole house, with the exception of the kitchen and toilet facilities, is covered with carpet on underfelt or screed.

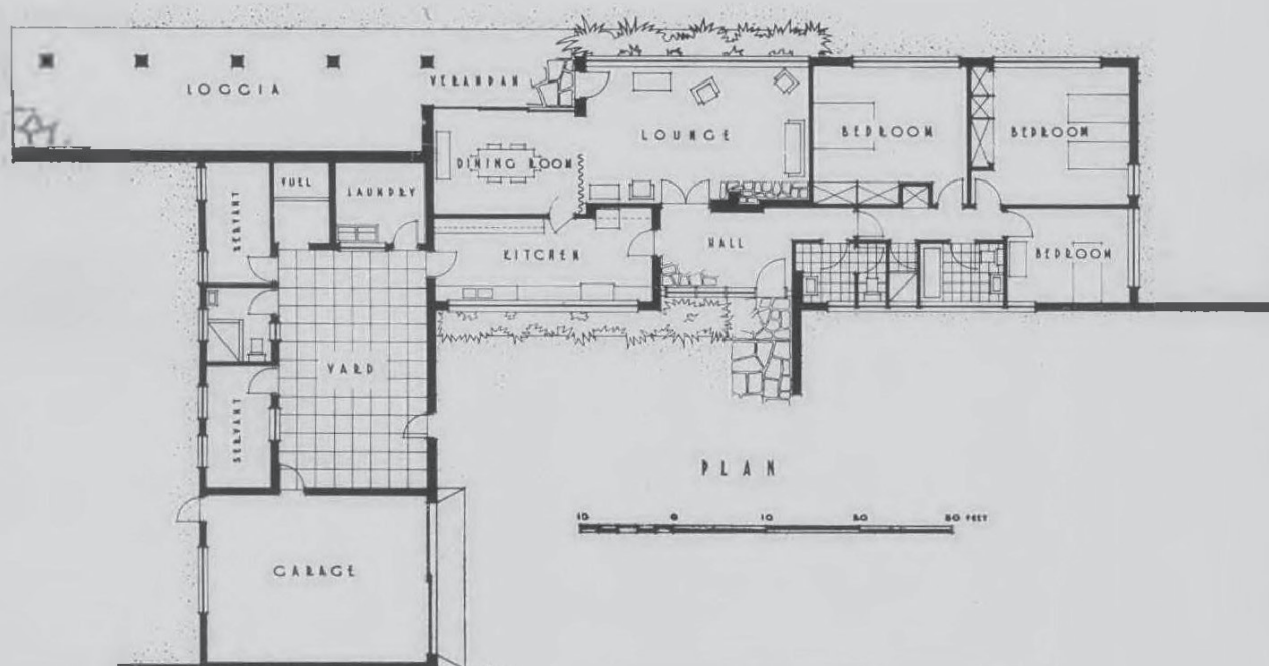
The kitchen floor is finished with asphalt tiles and the toilet rooms with encaustic tiles.



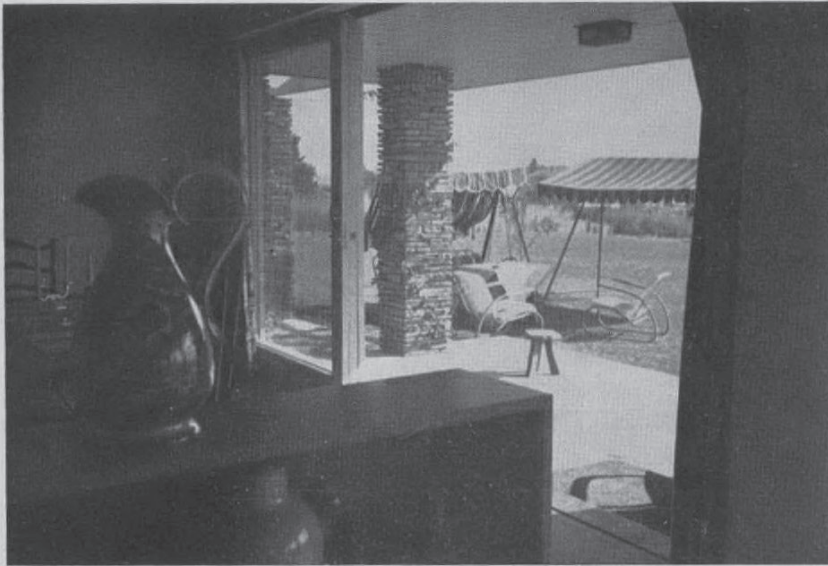
View of the lounge looking from the dining room showing the large view window overlooking the garden on the North.



View across the lounge towards the verandah and showing the stable door and generous garden views.



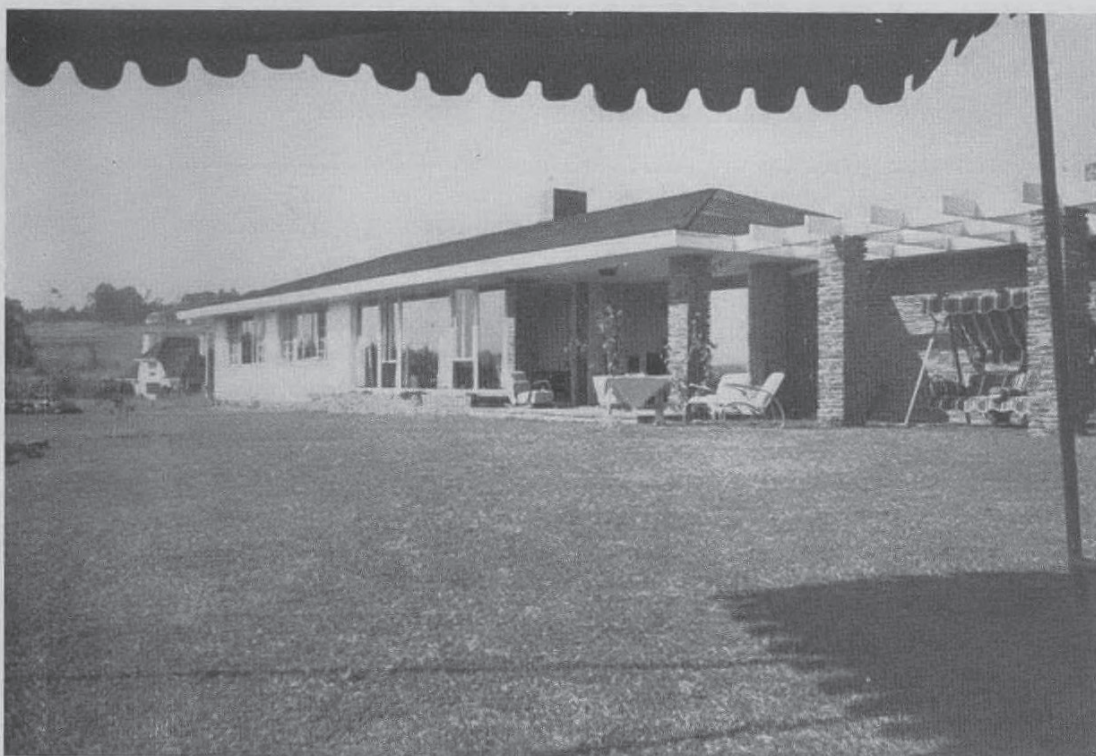




ABOVE: View from the lounge across. The dining room showing the plate glass sliding doors dividing the dining room from the verandah.

BELOW: A close-up of the verandah from the garden, with the lounge and dining room doors beyond.





View from the North-west.



SOUTH ELEVATION



## Annex 2





Annex 3

