

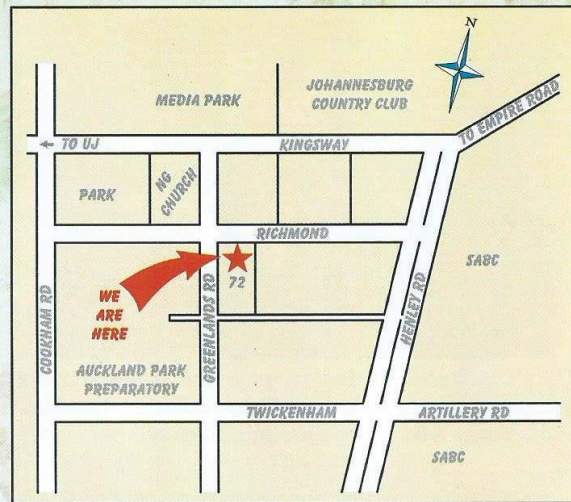
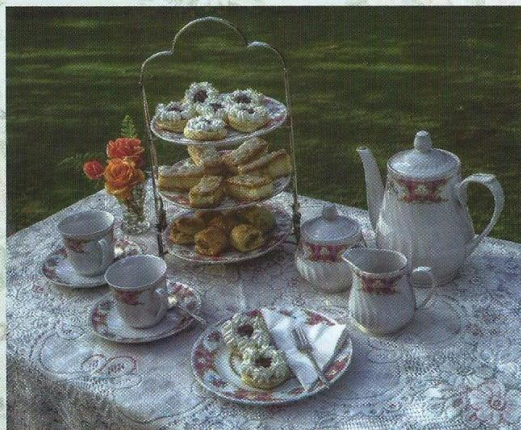


Lindfield contains an astonishing collection of decorative items as well as costumes and accessories from the Victorian and Edwardian eras. Specialised exhibitions are held from time to time and the reserve collection is open for viewing by prior arrangement.

Tea, coffee and light refreshments are served after each tour. Special Victorian and Edwardian High Teas may also be booked in advance

TOURS:

- R70** Including Tea
- R50** Tour only
- R50** Senior Citizens and Students - tour and tea
- R120** High Tea and Tour - booking one week in advance



GPS: 26°11/71''S - 28°00'29.47''E

Directions:

From Pretoria and the North:

on the M1S take the Empire Road offramp-
Turn right into Empire Road
Continue until Empire reaches a T-junction with Kingsway
Turn right and second left into Greenlands Road
(opposite Media 24). **Lindfield** is one block on your left,
entrance in Greenlands Road.

From the West Rand:

Take Ontdekkers Road to Hurst Hill-
Turn left into Perth road and continue past the University
of Johannesburg to University road.
Turn right at the traffic lights and first left into Richmond Ave
Lindfield is in the third block on your right,
entrance in Greenlands Road.

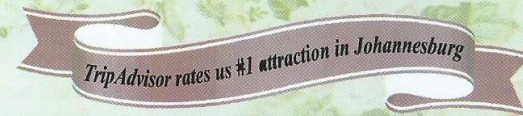
Hours of Opening

Lindfield is open every day by Appointment only
Call ahead to book your tour

011 726 2932

lindfieldhousemuseum@outlook.com

Lindfield is a privately owned and operated Museum



'Lindfield'

Victorian House Museum
72 Richmond Avenue
Auckland Park 2092
Johannesburg



**Travel back in time to a more
gracious Victorian and Edwardian era**

Pay a visit to this fascinating Heritage Site

Tel: 011 726-2932

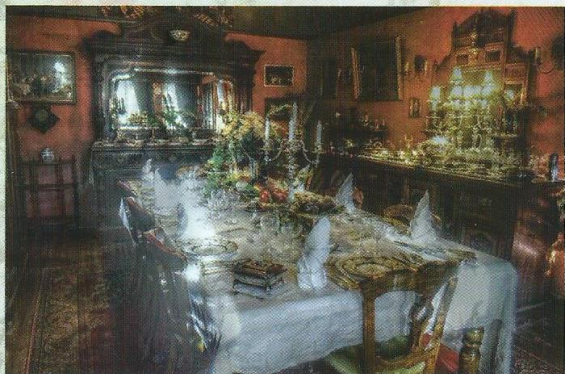
Follow us on our website:
<http://lindfield.wix.com/museum>

Tours Daily by Appointment only

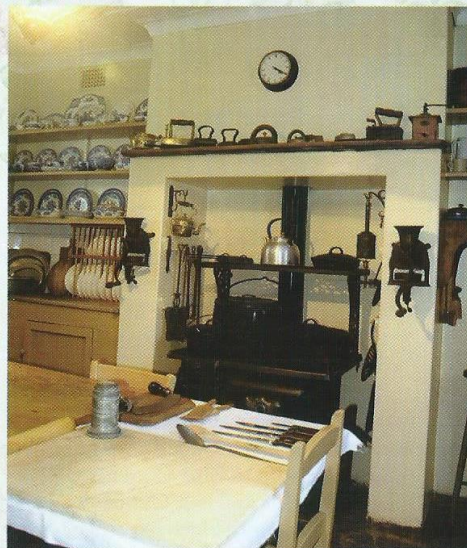
Lindfield is a turn-of-the-century Herbert Baker home in the leafy suburb of Auckland Park, Johannesburg. The true magic of this lived-in Victorian museum lies within its walls, where for two generations the women of the Love family have amassed and cared for a vast collection of 19th and 20th century furniture, art, decorative and utilitarian objects representative of the entire Victorian, Edwardian and Art Nouveau periods.



At present 18 of the 22 rooms in the house are open to the public, including all the principal reception rooms. The ladies' Drawing Room, gentlemen's Library, gracious Music Room and the formal Dining Room contrast with less imposing rooms, such as the children's Dining Room and the Nursery Wing.



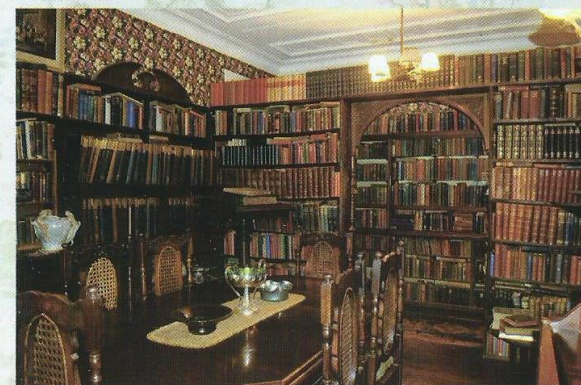
The six Bedrooms on display range from the 1860s main Bedroom, through a number of later Victorian chambers to the Nanny's Bedroom and Night Nursery.



Visitors to **Lindfield** are allowed a rare peek "behind the scenes" - the bathrooms, pantries and kitchen are all on view. These rooms are of especial interest to students of social history and speak of the class divisions of that time.



A unique feature of **Lindfield** is the comprehensive nature of its contents: each room on show is fully furnished and equipped, just as it would have been when the house was first lived in. The kitchen is ready for staff to prepare daily meals; the bathroom invites one to step into the boxed-in cast iron bath; in the library one is tempted to browse away the day among the fascinating books lining the walls. In the drawing room a table is laid for an At Home tea, while the dining room awaits a party of elegant dinner guests.



Lindfield's appeal is universal. There is more than enough to interest the masculine visitor, and children of all ages will delight in the glories of its beautifully maintained Dolls House and the toys of a bygone era. Tours of the house, lasting approximately 1½ hours, are personally conducted by the owner, Katharine Love, in the guise of a Victorian parlourmaid.

